

Weekly Australian Climate, Water and Agricultural Update

Department of Agriculture, Fisheries and Forestry
(ABARES)

150206

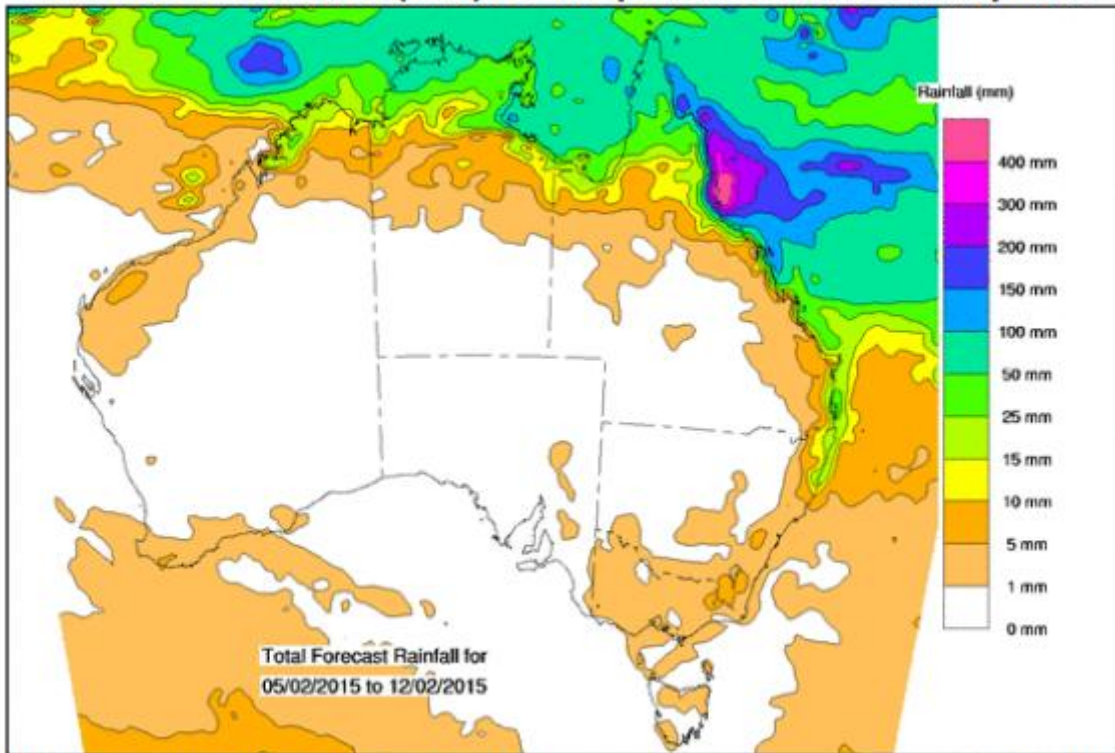
Stefanie Schulte
Policy Manager

The information and data provided in this weekly update are reproduced from the ABARES publication. The data is not independently verified and is only provided as a service. The ABARES report can be found [HERE](#).

Summary of key issues relevant for NSW:

- During the week ending 4 February 2015 rainfall was recorded across western, northern and eastern Australia. Rainfalls in excess of 25 mm were recorded across coastal NSW and eastern VIC. The highest recorded rainfall total was 242 mm at Coffs Harbour.
- The forecast for the next eight days indicates that rainfall is most likely to be restricted to the far north and the east coast of Australia.
- Most of NSW, VIC and TAS recorded below average temperatures.

Total forecast rainfall (mm) for the period 5 to 12 February 2015

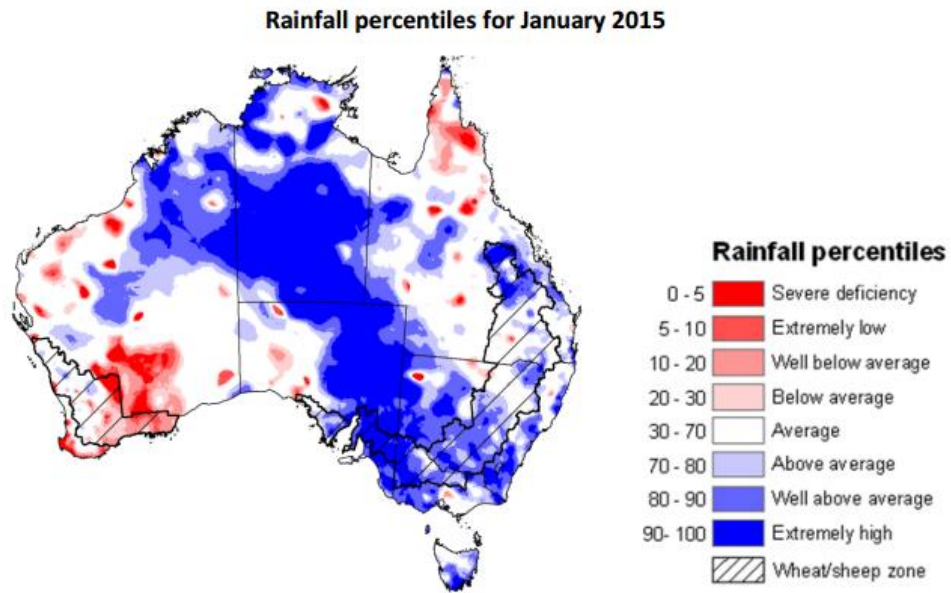


©Commonwealth of Australia 2014, Australian Bureau of Meteorology

Issued: 4/02/2015

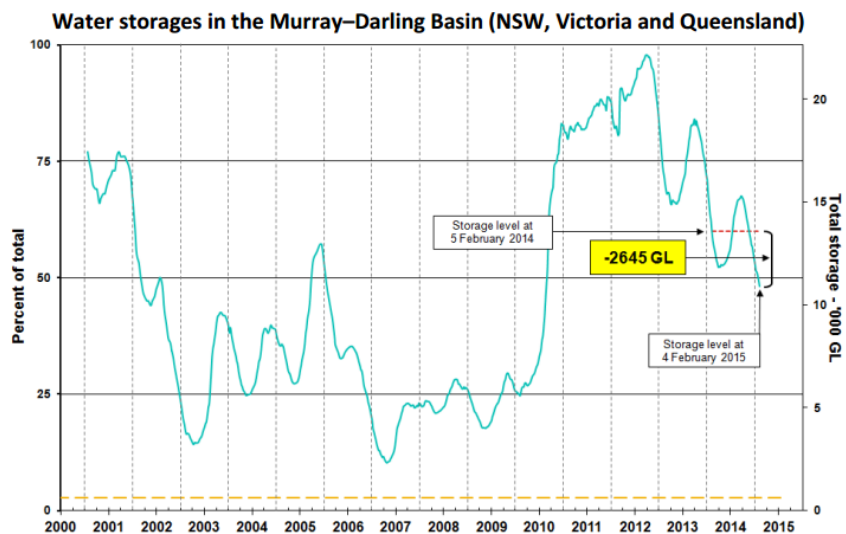
Rainfall outlook

- January 2015 rainfall was average to well above average across much of Australia. Extremely high rainfall was recorded across a large band extending from northern Australia through to the far south-east of the continent.



Water availability

- Water storage levels in the Murray-Darling Basin decreased this week by 245 GL to approximately 48% of total capacity. This is 12% less than this time last year.



Information on irrigation water available in the Murray–Darling Basin from 1 January 2001 to 5 February 2015 is shown above. The top horizontal (short dash) line indicates the storage level at the similar time last year. The bottom horizontal (long dash) line indicates the amount of 'dead' or unusable storage.

Water Storages

- Changes in regional water storage for January 2015 and the previous 12 months are summarised in the table and graphs below.

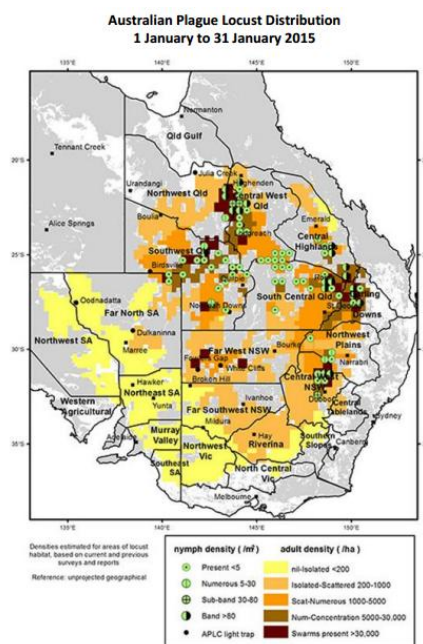
Region	Total capacity (GL)	Current volume (GL)	Current volume (%)	Monthly change (GL)	Monthly change (%)	Annual change (GL)
Murray-Darling Basin (MDB)	22559	10866	48	-745	-3	-2645
Murray-Darling Basin Authority (MDBA)	9352	4767	48	-462	-5	-1245
Queensland MDB	186	163	88	22	12	103
Central Queensland	3154	2779	88	452	14	609
South-east Queensland	3517	2615	74	384	11	210
New South Wales MDB	13884	4481	32	-522	-4	-1852
Coastal New South Wales	1074	909	85	2	0	-82
Victoria MDB	8488	6222	73	-245	-3	-896

Australian Plague Locust Distribution

According to the Australian Plague Locust Commission, locust swarms were reported across the Central West and Far West regions of NSW and the North West, Central West, Southwest, and South Central and Darling Downs regions during late January 2015.

A large nymphal generation developed in several regions of QLD and NSW during January 2015. Hatching of eggs laid by adults during December 2014 produced many small bands from early January 2015 in parts of South Central, Central West and Southwest of QLD, and in Central West NSW. Localised nymph bands also developed in adjacent areas of the Central Highlands and Northwest regions of QLD, and the Far West and Northwest regions of NSW.

Locust densities remained low across most of SA and VIC, but localised high density nymphs and swarms of young adults have developed across parts of the Far North region of SA in late January.



Developments in indicator prices for agricultural commodities:

Commodity	Average Price	Percentage Change
Sugar	US 14.6 cents a pound	5.19 % lower
Wheat (red winter)	USD \$ 247 a tonne	3.03 % lower
Canola (Rapeseed)	USD \$ 403 a tonne	2.65 % lower
Cotton (Cotlook 'A')	US 67.6 cents a pound	2.42 % higher